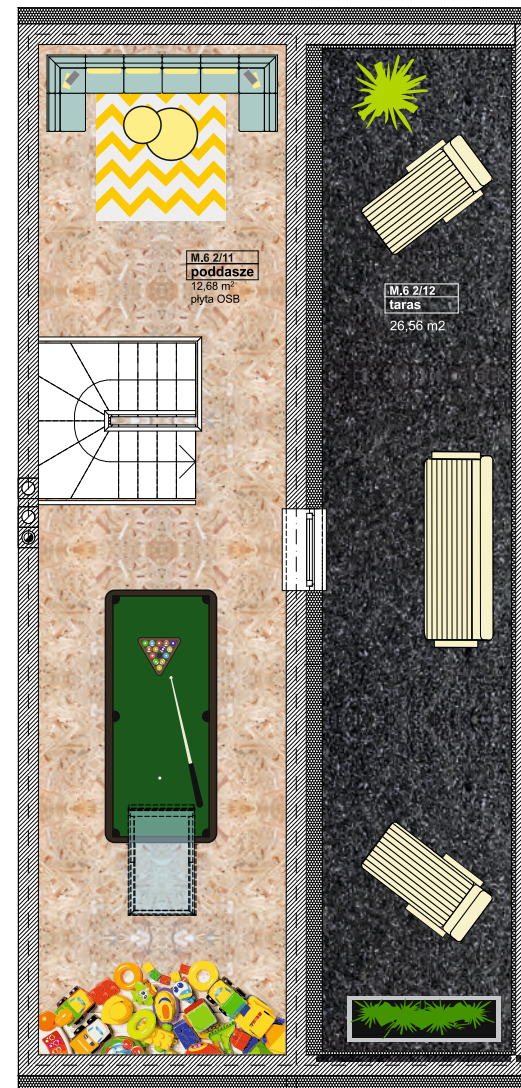
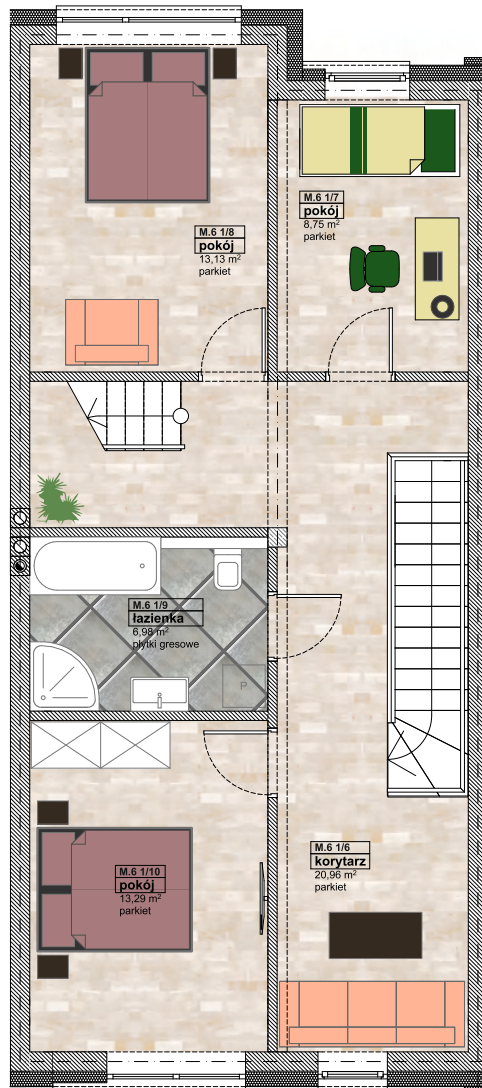
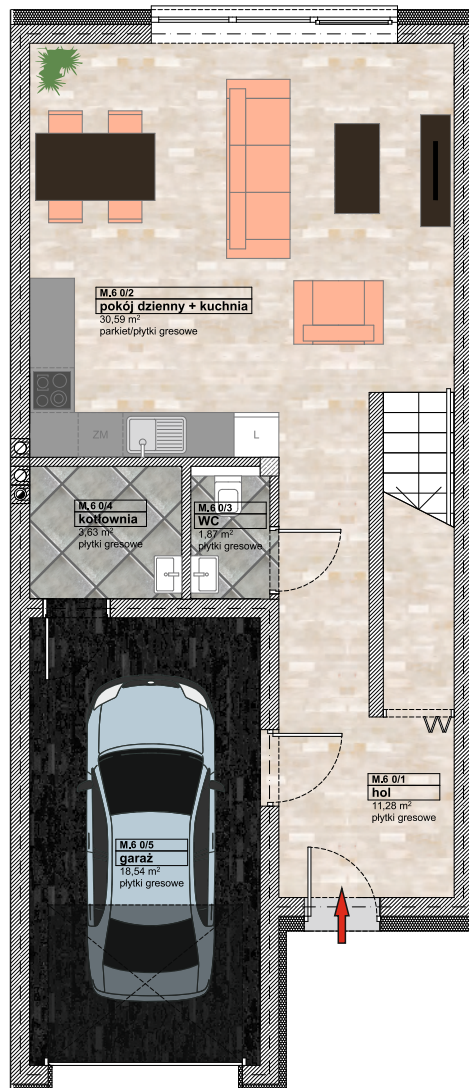


6

141,70 m<sup>2</sup>

+taras 26,56 m<sup>2</sup>



## ZESTAWIENIE POMIESZCZEŃ

### PARTER

1. HOL	11,28 m <sup>2</sup>
2. POKÓJ DZIENNY + KUCHNIA	30,59 m <sup>2</sup>
3. WC	1,87 m <sup>2</sup>
4. KOTŁOWNIA	3,63 m <sup>2</sup>
5. GARAŻ	18,54 m <sup>2</sup>

### PIERWSZE PIĘTRO

6. KORYTARZ	20,96 m <sup>2</sup>
7. POKÓJ	8,75 m <sup>2</sup>
8. POKÓJ	13,13 m <sup>2</sup>
9. ŁAZIENKA	6,98 m <sup>2</sup>
10. POKÓJ	13,29 m <sup>2</sup>

### PODDASZE

11. PODDASZE	12,68 m <sup>2</sup>
12. TARAS	26,56 m <sup>2</sup>

